

Welcome  
2021 Lake Owasso Association  
Annual Meeting (via Zoom)



*Lake Owasso  
Association, Inc.*

# Agenda

## 2021 Lake Owasso Association Annual Meeting

- 7:00 Introduction
- 7:05 Electronic signup/payment
- 7:10 Treasurer's report
- 7:15 2021 treatment program
- 7:25 Carp update
- 7:30 Weir enhancement/replacement
- New Business
- Adjourn



*Lake Owasso  
Association, Inc.*

Annual meeting

April 22, 2021

# LOA Board Officers & Directors

## Lake Owasso Association Board Members:

Woodbridge/E. Owasso	Dave Lutz (Secretary)	651-230-2110
•S. Owasso/Sandy Hook	Steve Youngquist	612-419-9454
•Sandy Hook Dr.	Andy Walz	612-396-3179
•Heinel Drive	Scott Schultz	651-746-4689
•Heinel Drive/Victoria	Dan Kelsey	651-628-9536
•W. Owasso Blvd.	Edward Roberts	651-484-1162
•. Owasso Blvd.	Jill Roberts	612-308-7153
•W. Owasso Blvd.	Judy Wood (Treasurer)	651-483-2700
•Chandler Drive	Chuck Nelson	651-481-9680
•Horseshoe Drive	Nito Quitevis	651-484-5717
•N. Owasso Blvd.	Joe Bester (President)	651-260-3408

[info@lakeowasso.org](mailto:info@lakeowasso.org)

[www.lakeowasso.org](http://www.lakeowasso.org)

(visit the web site)



*Lake Owasso  
Association, Inc.*

Reminder: Add [info@lakeowasso.org](mailto:info@lakeowasso.org) to your address book.  
This will help prevent email from the LOA from being directed  
to your junk folder.

# Introduction of Electronic Signup and Payment

- 80% are now more streamlined
- Going forward remaining 20% will still require additional effort to minimize manual and labor-intensive activity
- What can I as a resident do to help on this remaining 20%?
  - Get your current email address to LOA
  - Add [info@lakeowasso.org](mailto:info@lakeowasso.org) to your address book
  - Help a neighbor if you know they are uncomfortable with the e signup method



# Lake Owasso web site officially launched in February 2020

[www.lakeowasso.org](http://www.lakeowasso.org)

Always feel free to contact your neighborhood representatives noted in the previous slide. At the same time you can use the web site for various resources, like printing a duplicate treatment form, or information about the annual meeting schedule.

Bookmark lakeowasso.org to your favorites

**Please note the web site is 15 months old and developed with all volunteer effort.**



*Lake Owasso  
Association, Inc.*

# Treasurers Report

Judy Wood - Treasurer

Balance on Jan. 1, 2020 \$23,745.77

Aquatic & membership fees 19,353.50

Interest 259.42

TOTAL \$19,612.92

## Expenses:

Aquatic Plant Control & Permit 25,678.91

Office Supplies, postage 99.69

Other 199.00

Total Expenses \$25,978.60

Balance on Dec 31, 2020 \$17,580.09



*Lake Owasso  
Association, Inc.*

# 2021 Treatment program

Continued focus on:

Eurasian water milfoil



Curly leaf pondweed



Additional focus:



# 20-year anniversary of EWM on Lake Owasso



*Lake Owasso  
Association, Inc.*



# Slender Naiad



Slender Naiad



# Curly leaf Pondweed



*Lake Owasso  
Association, Inc.*

# Formula review

- Up to 100' or 50% of shoreline, whichever is less. For lots 70' and less, allowance is 35'
- Examples:
  - for a 250' lot - allowance is 100'
  - for a 150' lot - allowance is 75'
  - for a 60' lot - allowance is 35'



Note that some lots in the southern bay are classified differently by the DNR where the treatment allowance may be different.

# Carp Harvesting with electronic net capture (test at public beach)



*Lake Owasso  
Association, Inc.*

# Recreational Carp Fishing Contest

Sponsored by RWMWD

Program will take a youth learning approach



*Lake Owasso  
Association, Inc.*

# A Christmas delicacy in the Czech Republic Carp from the bathtub

<https://www.youtube.com/watch?v=aXp-rRkb6k8>

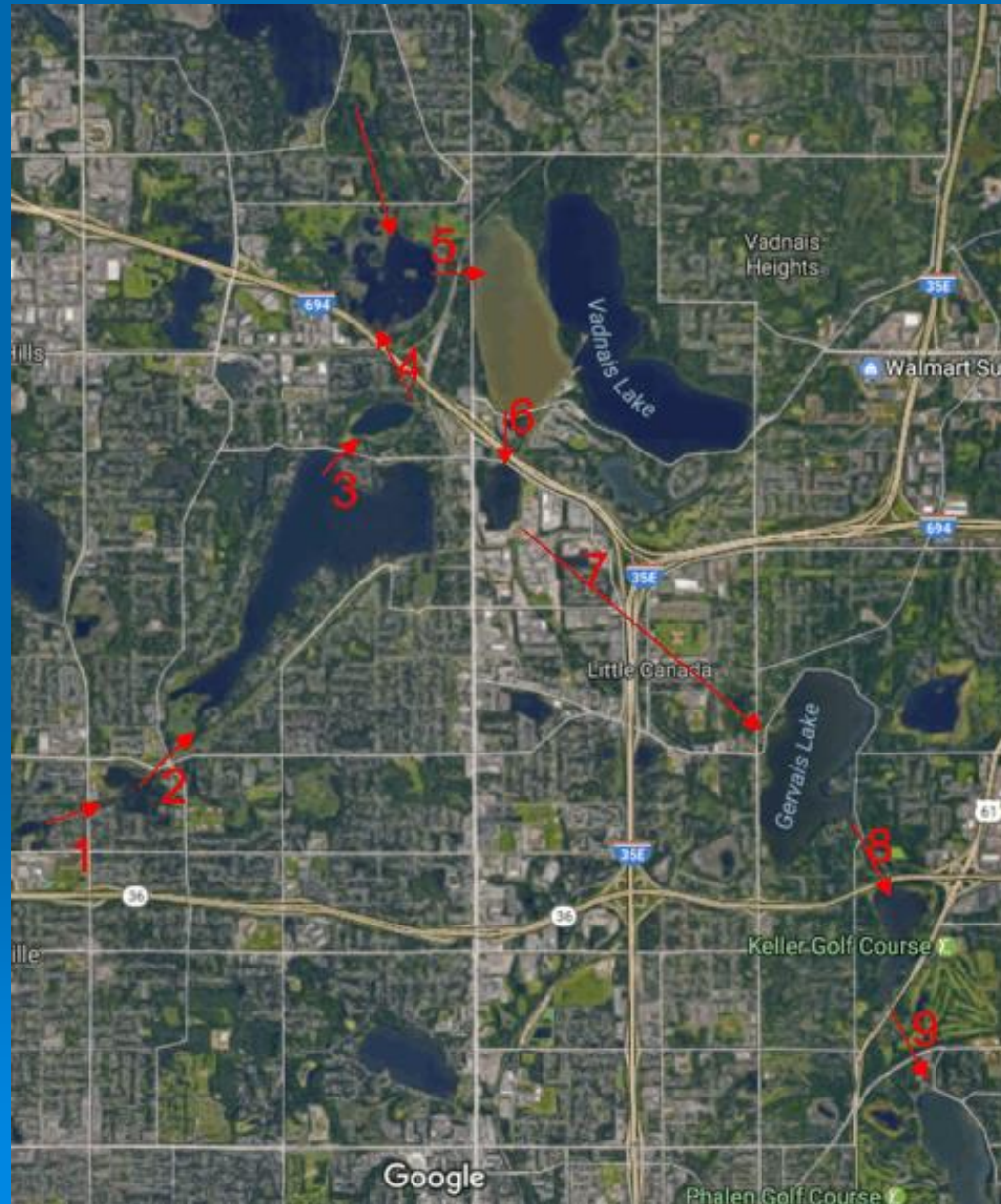


*Lake Owasso  
Association, Inc.*

# Portion of RWMWD map containing major water bodies

## In sequence

- Lake Owasso
- Lake Wabasso
- Grass Lake
- West Vadnais
- Gervais
- Keller Lake
- Lake Phalen
- Mississippi



*Lake Owasso  
Association, Inc.*

# Weir between Keller and Phalen downstream side



*Lake Owasso  
Association, Inc.*



# Weir between Keller and Phalen upstream side



*Lake Owasso  
Association, Inc.*

# Weir on the South end of Lake Phalen



*Lake Owasso  
Association, Inc.*

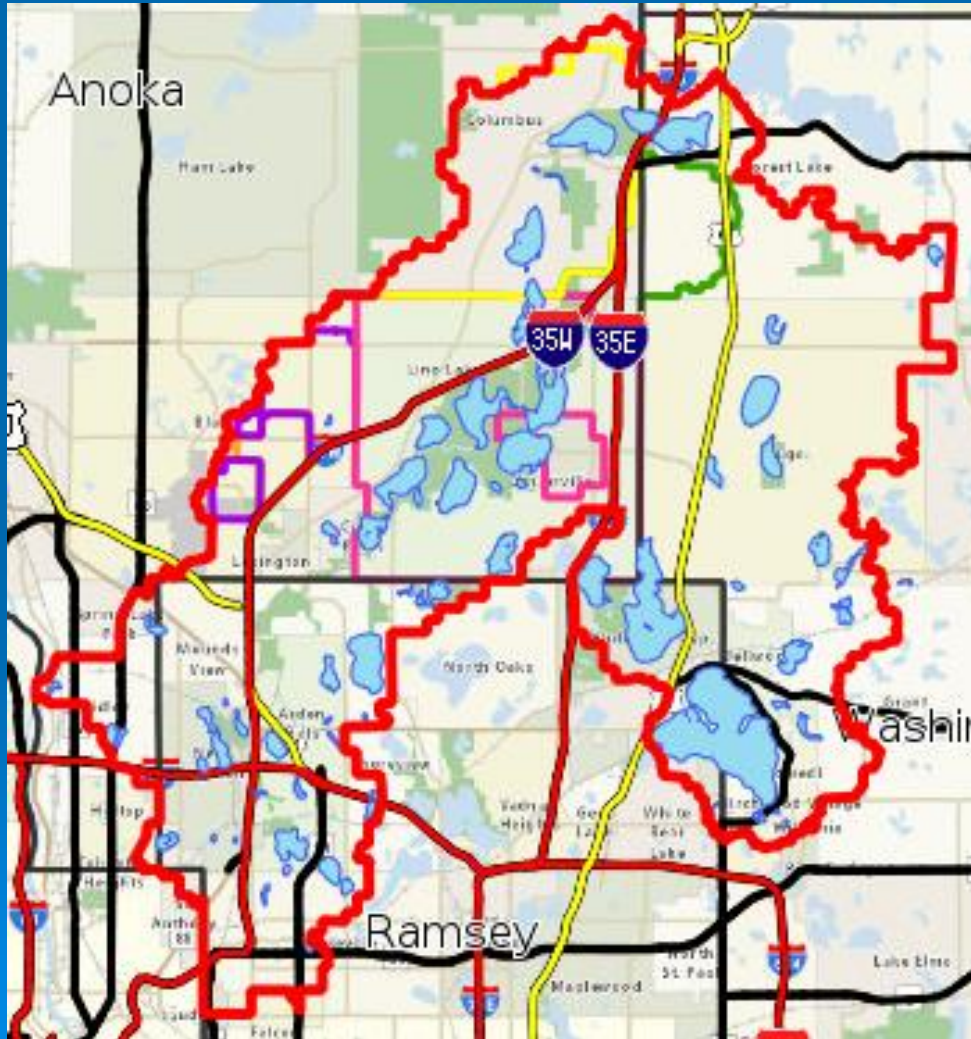
# RWMWD – Monitoring water level electronically



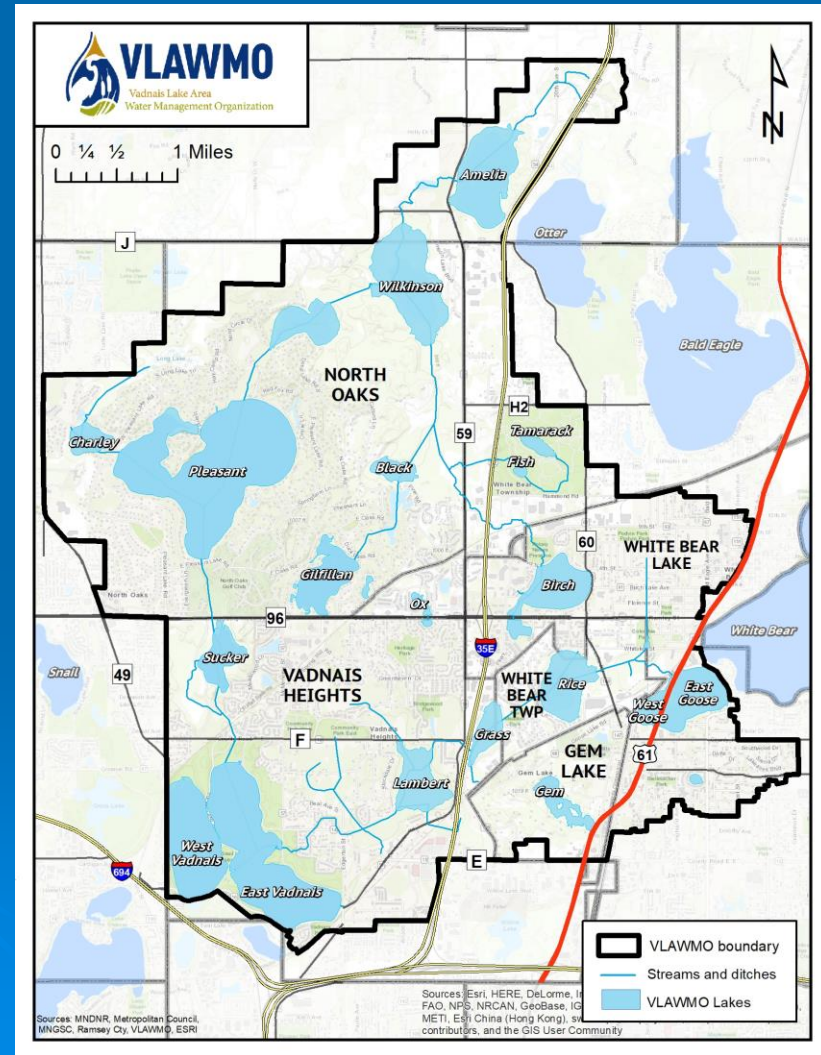
*Lake Owasso  
Association, Inc.*

# Adjoining Watershed Districts

## Rice Creek



## Vadnais Lake Area



# Courage Center



*Lake Owasso  
Association, Inc.*

# New Business



*Lake Owasso  
Association, Inc.*

# Motion to adjourn



*Lake Owasso  
Association, Inc.*

Photo: Courtesy of Mary Tragiai